

Al Gurashi

International Services & Investment Co. Ltd.



COMPANY PROFILE

AL Gurashi International Services & Investment Company Ltd. (GISI) was incorporated in 2001 - as an extension of Camp Services Sudan Ltd. which was established on Aug 1978 and started works in support of Chevron Oil of Sudan and all its contractors in providing geophysical inputs drilling by Parker Drilling Company, Oil Field Supply International (OSI) and the provisions of services/supplies to the Government of Sudan (GOS) Military establishment from 1984 up to 1999 and United Nations from 1985 up to the present.

GISI through its subsidiaries (MIDO International Company and Bayadir AL Gurashi Transport has provided logistical services to World Food Programme (WFP), Care International , SCF UK, EC, German Agro Action, ICRC, UNICEF etc...The transport of relief commodities and cargo handling services from 1985 up to the present. Through its subsidiaries namely; MIDO International Company and Bayadir AL Gurashi Transport has enhance the capabilities of the "Company" in promoting the upgrading and developing of an effective means of communications follow up operations of on-going projects which has created new methodologies of reporting and monitoring systems and improving its land transport activities, freight forwarding, logistical services, custom clearances, camp services, food and general supplies, local purchases - sales agent - Export & Import The executive structure of the company consists of five main divisions; - Operation - Logistics Team - Supplies - Administration - Finance. Each of this . Division conducts all the activities related to its field.

GISI, is backed with solid experiences in the field of supply and transportations, has been providing exceptional services for its diverse clients, under difficult circumstances of weather and conflicts, meeting its clients changing needs and their transport deadlines across the whole country.

GISI has been transformed from a trucking company to a nationwide leading logistic company through constant growth and adjustments to the market changes. Throughout the operating years, our company has build its expertise and collected logistic know-how and perfected it to a high level of standards. Our exceptional operative performances are therefore based on the vast experience and knowledge of our experts and will be continually optimized through constant innovative developments in order to serve our customers'needsbest.

GISI is based in Khartoum with branch offices in ... and points of deliveries connecting the whole country, building reliable transportation network. We are proud to say that our company is one of the biggest in this part of transportation services in the country. We are registered member with the National Chamber of the Heavy Trucks (The Dry Cargo), and as a full service transportation company, GISI handles all modes of transportation. In order to maintain our unmatched reliability all shipments are controlled and monitored by a sophisticated track and trace system.

ADMINISTRATION:

This division carried all the activities and functions related to its scope of activities. During the past years, **AL Gurashi** through this division had executed several projects, breakdown are as follows:

" Provision of food supplies and other services by our company. MIDO International Company for China Petroleum Engineering Construction Company (CPECC), cars, catering, man power (drivers, administration officers, cooks, electricians, welders, security and laborer), tents, welding machines, generators, water for the survey department for the period of 2 Years beside the provision of the First Aid Stations. " Provision of drivers, engineers, mechanics, officer, clerks, welders, electricians, crane operators, heavy machines operators, security, water and food supplies, tents, water tanks (drinking water) beside the provision of first Aid for the mobile camps for LOSEC company.

Provision of manual labors for companies upon their request in or out side Khartoum.

Provision of transport for CPECC staff from the airport to CPECC residences in Khartoum.

Provision of catering services for Federal Air Lines passenger from 1994 up to April 1998.

Contracted to carry out the custom clearance activities for CPECC. For the execution of such project this division had set up small medical unit for the provision of the First Aid Station as called of in its safety program.



COMMUNICATIONS:

GISI have an advanced means of communications (base station-mobile radios & walkie talkies) covering 18 main towns : (Khartoum, Obeid, Kosti, Port Sudan, Gedarif, Kassala, Sinner, Muglad, Nyala, Fasher, Geneina, Ed-Deain, Babanosa, & Rahad, Higlig, Bentiu, Rabcona, Malakal) and 6 mobiles VHF/SSB communication system for the follow up of any cargo operations, and also GISI is ready for establishing new stations for communication when needed, these equipment are under the direct supervision of well qualified staffs.



REPORTING SYSTEM:

GISI have developed the means of reporting system in all its field offices (daily situations reports) because we consider the reports are the main factors for such operation. We also have capable staffs for handling that issue.

FIELD MONITORING:

As any transport operation needs a very close follow up, have set up qualified field monitoring teams, equipped with all the request means of communication equipment for follow up of on-going programs. These teams had executed several relief food movements in different Environment, and to different Locations.



FIELD OFFICES:

GISI have permanent field offices located as mentioned above these field offices are well equipped with all means of communications, follow up, and reporting systems.

Qualified staff is assigned for the supervision and representation and to coordinate with the local authorities for the benefit of the programs. Other new offices can be established for covering any requirements or activities for new programs.



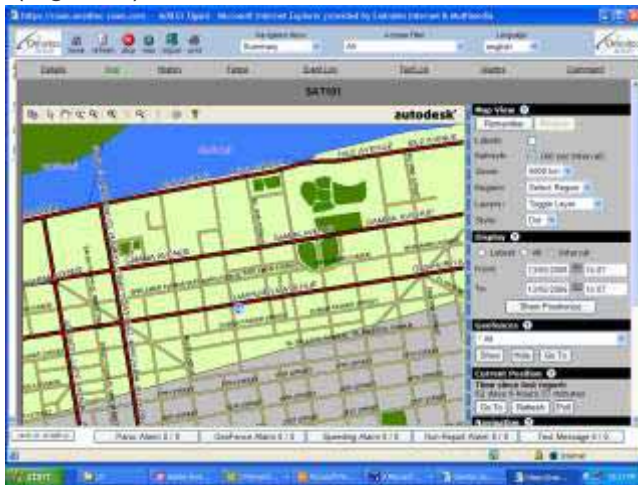
Tracking Systems

Skywave surelinx 8100



You can display the vehicle on a map (blue dot) by clicking the Map link. The following screen will appear (figure 4).

(Figure 4).



The initial map shows a country overview, containing the larger landmarks (big cities). The Map Guide viewer can display more detailed maps and can switch among pre-defined zoom levels. These options are available from the Map Guide button bar (Figure 5).



Figure 5: Map with Satellite Image

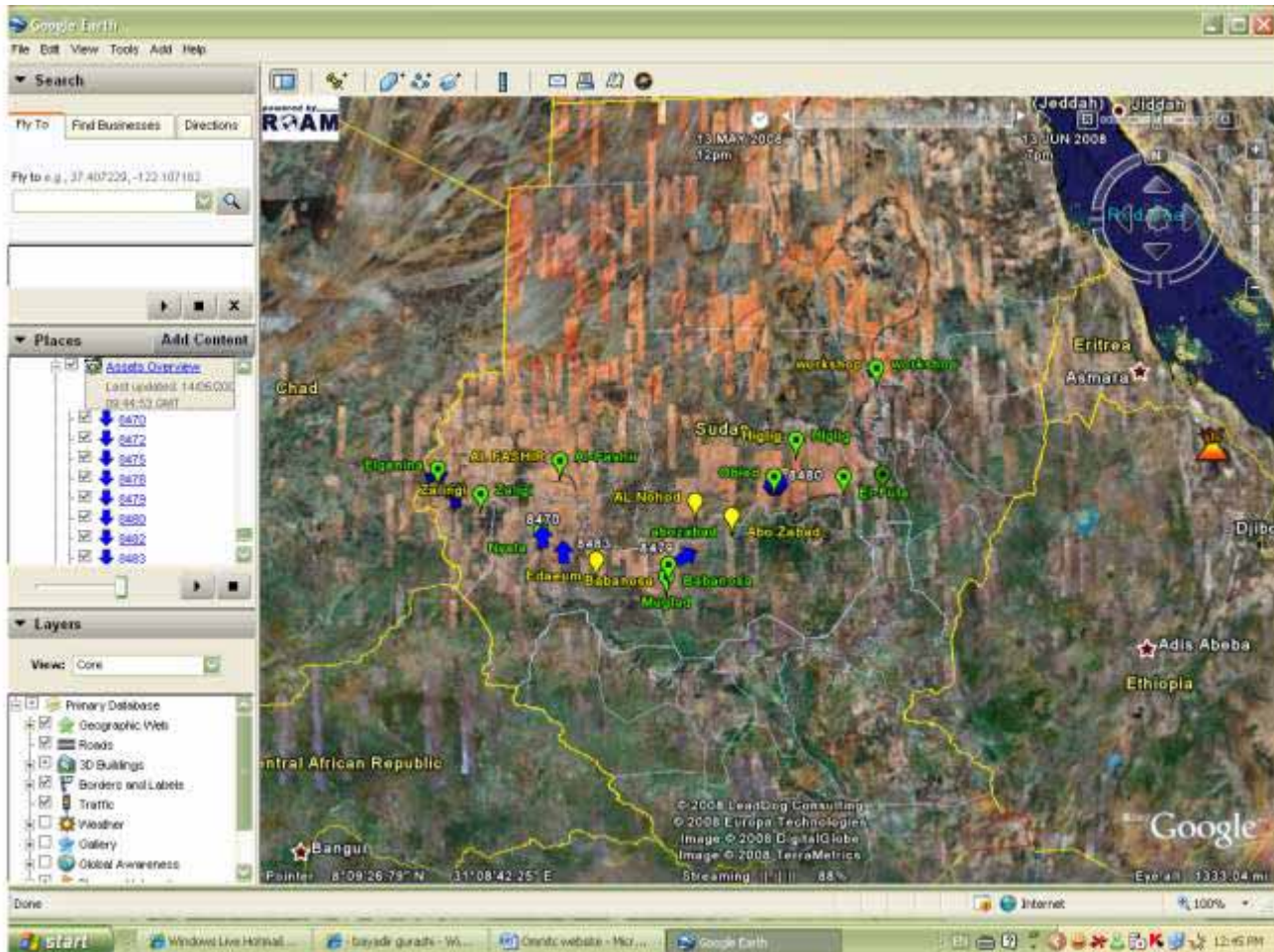
3. Monitoring

GISI and its consortium have an advanced means of communication (base station, Mobile, Radio and Wakie Talkies, 18 main towns (Kh, Obeid, Kassala, Sinar, Muglad, Nyala, Fasher, Genena, Aldeain, Babanosa, Rahad, Higlig, Bantiu, Robcona and Malakal and six mobile VHF/SSB communication system for the follow up of any cargo and transportation and also GISI ready for establishing new station of communication when needed.

These instruments are under the direct supervision of well qualified staff. (Officers will be nominated for these purposes with their contact means to UNAMIS upon signing the contract. GISI has developed the means of reporting system in its all fields and offices because collection of the information and reports are essential for operations as any transportation needs a very close follow up, so it has set up field monitoring terms equipped with all means of communications for follow up.

Tracking by Google Global communication System :

AL Gurashi Provide New Tracking Global communication System for Fleet Managements Technology combines basic tracking with sophisticated security and vehicle diagnostics. We use multiple satellite, GSM and cellular systems in order to enable a highly cost effective global solution. Our proven value proposition enhances fleet utilization, while providing increased control and dramatically improved customer requirement.



AL GURASHI CO. PROFILE

NAME: AL GURASHI INTERNATIONAL SERVICES & INVESTMENT CO. LTD

No.	Item	DISCRETION
1	1Background of COMPANY	SEE COMPANY ATTACHED C.V
2	Business Registration/ No. Of (Company, Firm, Partnership)	No.: 16939
3	Registered Business Address	AL AMARAT ST. 45 BLOCK NO.12 HOUSE NO. 40 2nd FLOOR
4	Company Directors	I) Name: GURASHI A/RAHMAN ALKHABIR Title: CHAIRMAN ii) Name: AMIR ABDEL RAHMAN Title: GENERAL MANAGER iii) Name: MAHMOUD ABDUL RAHMAN Title: BOARD MEMBER OF DIRECTOR iv) Name: ALTEGANI ALASAM Title: FINANCE MANAGE
5	Major Company Shareholders	I) Name: GURASHI A/RAHMAN Equity share: 75% ii) Name: MUGTABA GURASHI Equity share: 15% iii) Name: ELAF GURASHI Equity share: 10%
6	Company's Authorized And Paid-Up Capital	(i) Authorized Capital*: 4000,000 SDG (ii) Paid-Up Capital*: 30,000,000 SDG
7	Name/Address of Company's Banker(s)	SAUDI SUDANESE BANK ALAMARAT ST. 15 ST SDC Bldg SUDANESE FRENCH BANK KHARTOUM II
8	Name/Address of Company's Principal(s) Subsidiaries/ Affiliate(s)	BAYADIR AL GURASHI TRANSPORT COMPANY AMARAT St 45 SAUDI SUDANESE BANK ALAMARAT ST. 15 ST SDC Bldg

We **AL GURASHI INTERNATIONAL SERVICES & INVESTMENT CO. LTD** hereby certify that the above information are true to the best of our knowledge and hereby give the right to verify the information herewith provided for evaluation Purpose.

Name: *Gurashi A/A/ Khabir*

Chairman and General Manager



Bayadir AL Gurashi Transport

Operations Manuel

Bayadir- is create new method of work plan depending on the latest technology of allocated trucks on roads depending on the first class staff supporting by truck pushers company special convoy of oil rig move or off road missions .

In order to keep our hand control to our fleet we follow following system:

(A) Communications:

Bayadir- imported ten set of brand new Digital VHF Codan Radio erected at three stations Port Sudan, Kosti & Obeid plus four mobile mounted at 4X4 Station & pickups flow up vehicles

(B) Trucking Time Sheet:

Each truck will be attached by time sheet showing road progressing around a clock (form#OP-012) this form will keep the history of the truck during each month to help our IT department for monthly and yearly analyses.

(C) Work order :

Each contract of work will be stated on work order file with all back up & reference documents showing the requiring progress of the operations, it will be the guides of the hall work (form #OP-013)

(D) Daily Trucking Reports:

At 7:30am all sub stations, truck pushers & what so ever concerning should report to Information department for his status mention all information of trucks & cargo loaded (form#OP-014)

(E) Safety :

Bayadir gives the safety more attention starting from the stander of hiring the personnel, maintenance program, Loading supervision truck pushers' reports & the monthly meeting Bayadir - have medical records for each personnel show his medic history and made half year checking for the high way driver to avoid any Rick of the personnel's fit conditions, more over the company providing free medic support plus emergency evacuation in case of road accident or sick during work .

Sub offices

Port Sudan office - Run by field transport durable personnel with ten years of back ground of cargo logistics knowledge more over he is mutual with custom clearance & sea ports regulations, he has the abilities of working independent & maintaining good relations with government official department. He is supervision the progress of cargo handling & dispatch cargo up country more supervision trucking department. And any jobs related Controlling financial & administration status of the station - keeps all the records on order basses

Obeid Office: follow up office for cargo dispatch or Trans shipment - run by hard worker personnel can avoid any delaying on off loading times and preparer back loads @ good prices more over keep the following of trans shipment or dispatching to off road locations in order, maintaining good relations with government official, controlling financial & administration status of the station & and any jobs related- keeps all the records on order basses

Kosti sub office: follow up office for cargo dispatch or Trans shipment - run by hard worker personnel can avoid any delaying on off loading times and preparer back loads @ good prices more over keep the following of trans shipment or dispatching to off road locations in order, maintaining good relations with government official, keep control on coming and back truck on the way and any jobs related- keeps all the records on order basses

Truck pushers: truck pushers are using 4X4 vehicle control the movement of the trucks operating on special mission such as OIL Rig Move or heavy lift and off road operations more over clearance Port Sudan -Khartoum road from time to times.

Truck pusher is durable personnel with experience of seven years at the transportation with back ground of off road track company with one mechanic at off road mission or rig move operations , he is required to report daily by mobile radio mounted at the vehicle about his status and keep the radio on all the day to receive any instruction .



THE FLEET:

We would like to confirm the capability of our fleet, construction equipments and fuel tankers that consist of different units with different capacities. And can be utilized for both paved and rough roads in terms of cargo delivery and the construction equipments are qualified to execute any road construction operation.

These units and equipments under the supervision of well-qualified drivers and technicians, they have a good knowledge of Kurdofan area as general because they have conducted several operations with Chevron during its operation in Sudan, the below tables shows the type of the fleet and the capacity.

Table (A):

This table shows the numbers and the capacities of the fleet units that work General Cargo on the (asphalt road) and the total tonnage capacity per trip:

No.	Unit No.	Type	Unit Capacity	Total Capacity
1	33	Mercedes	70 MT.	2,310 MT.
2	20	Styer	55 MT.	1,100 MT.
3	28	Scania	55 MT.	1,540 MT.
4	36	DAF	65 MT.	1,820 MT.
5	18	M.A.N	60 MT.	1,080 MT.
	132 Units			7,850 MT.



Table (B):

This table shows the numbers and the capacity of the fleet units that work General Cargo on the (Rough roads) and total tonnage capacity per trip.

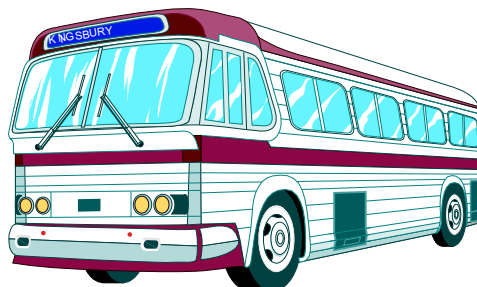
No.	Unit No.	Type	Unit Capacity	Total Capacity
1	22	Nissan	15 MT.	330 MT.
2	65	Hino - ZY	25 MT.	1,625 MT.
3	20	Styer	25 MT.	500 MT.
4	45	Hino - ZY	30 MT.	1,350 MT.
5	152 Units			3,805 MT.



Table (C):

This table shows the numbers and capacity of the fleet that works on the (Rough Road passengers Bus) and total Passengers per trip:

No.	Unit No.	Type	Unit Capacity	Total Capacity
1	18	Nissan	45 Psngs.	810 Psngs.
2	13	Mercedes	50 Psngs.	650 Psngs.
3	16	Hino - ZY	50 Psngs.	800 Psngs.
4	24	Others	45 - 50 Psngs.	1,090 Psngs.
5	71 Units			3,350 Passengers



FUEL TANKERS FLEET:

Referred to the above-mentioned, we would like to confirm that **AL Gurashi**. Company fleet of fuel tankers consisted of 121 units of different type and capacity breaks down as follows:-

(a) A number of 65 units with an attached trailers/ long trucks, these units will be utilized for the Asphalt road only and can be shuttled between the fuel source (Port Sudan) and Khartoum - El Obeid and any other site within the asphalt boundaries. These units can move a total of 3,397,500 liters per a trip and well equipped with the necessary equipments. All these units can be put under the services of your company if an agreement for that is made. The fleet of this 65 units (**Asphalt road**) breaks down as per the below table :

FUEL TANKERS FLEET: Table (A)

No.	Unit No.	Type	Capacity Per L		Capacity L	Total Capacity
			Head	Trailer		
A	120	Hino - ZY	22500	18000	40500	810,000
B	15	Renault	36000	36000	72000	1,080,000
C	5	Scania	31500	31500	63000	315,000
D	10	Styre	22500	36000	58500	585,000
E	15	DAF	40500	-----	40500	607,500
	65					3,397,500 L



(b) A number of 56 single units with different capacities (4000 - 5500) gallons. These units are ready for any rough road tasks and they can move a total of 1,255,500 gallons per a trip. The fleet of this unit breaks down as per the below table:

FUEL TANKERS FLEET: Table (B)

No.	Unit No.	Type	Capacity Per L	Total Capacity
A	20	Hino - ZY	5500	495,000
B	20	Nissan	5000	450,000
C	10	Nissan	4500	202,500
D	6	Hino - KY	4000	108,000
	56	Total		1,255,500 L



During any fuel transport operation AL GURASHI, Company puts team of supervisors and monitors for following up the activities of the fleet and rescuing any unit that breaks down immediately. These teams will be well equipped with land cruisers, which equipped with mobile radios. In our field offices also other manpower and means of communications, follow up and Transport will be put under the request of our supervisors and monitors who will be in the field

Joint Venture and Subcontractors

In an era of great flux in the commercial world, many companies are coming together forming strategic alliances and various partnering arrangements. These strategic, often complementary and at times cross boundary relationships are the new models for doing business in today's market place. Taking heed to this very fact; AMID's determination and enthusiasm in forming of its past joint ventures and other types of partnerships with prominent domestic and International concerns were no exception to the rule. In fact such practice was in line with our vision to build an enduring and advanced Logistics, supply, and transportation Project Management Organization which is capable of fulfilling major projects.

Below is a comprehensive list of companies with which AL Gurashi Company has signed agreements to form a joint venture, consortium, and/or other types of cooperation for various projects in the last 04 years.

GISI Logistics have been trading for over 23 years, specialising in the movement of 'bulk' volumes of raw materials, food commodities, containers, heavy Equipments, ...etc and supply food and non food itemes throughout the Sudan.

Operating a modern fleet of our own articulated 'tipper' vehicles, low beds, Barges, rig move, air lift and subcontractors, each one now offers a typical payload of different capacity. We are capable of fulfilling orders ranging from a single load to thousands of tonnes per week, carrying literally any commodity.

We would be grateful for the opportunity to quote for any movements that you currently have, or expect to have in the future. Opportunities also exist to complement our existing fleet of subcontractors and owner drivers on either a permanent or spot hire basis. Trailers hire and fuel bunkering is also available at competitive rates. Contact us now.

Agreements signed between AL Gurashi Company and other companies for joint cooperation for various projects

- Sudastructure Co. Construction and Engineering Company
- Mido International Co.
- Hassabo Trading and Transport Co. LTD
- Nile Petroleum Company
- Transportation companies
- M.HM Clearance & Forwarding Agencies
- EL Khabir Concrete Company
- Shanix Machinery Equipment Imp. & Exp. Corporation (China)
- Noga Company (Dubai)
- EL Majal Aviation Services Co. LTD
- Gharb EL Niwair for river transport



Heavy-Lift Fleet and construction Equipments:

The company provides new fleet and These units and equipments under the supervision of well-qualified engineers and drivers and technicians. They have a good knowledge of Kurdofan and Darfur areas as general because they have conducted several operations with Chevron during its operation in Sudan.



Construction Equipments:

AL GURASHI construction equipments, some of these equipments located out site Khartoum. AL GURASHI also has some other equipment of the same type under control and can be available when required.

1- Bulldozers: CAT/Komatsu

- a- D-7 Total of -----9----- Units.
- b- D-8n Total of -----5----- Units.
- c- D-9 Total of -----5----- Units.

2- Motor Graders: CAT/Komatsu

- A- G-14 Total of -----7----- Units.
- B- G-16 Total of -----4----- Units.

3- Scrapers

AL GURASHI owned a Total of -----6----- Units

4- Dump trucks

Having a total of -----40----- units of 16 cu.m & 18 cu.m capacities

5- Front End Loaders/ forklift. (980-950 - CAT)

AL GURASHI having a total of -----2----- units of Front End Loaders and a total of -----2----- units of Forklift.

6- Back Hoe - Excavators

We have a total of -----2----- units of Backhoes and a total of ---2--- units of Excavators

7- Roller compactors/sheep Foot/smooth drum Roller

AL GURASHI has a total of -----4----- units of sheep foot and ---4----- units of Smooth Roller.

8- Water Tankers

Having owned a total of ---121--- units of Fuel and Water Tankers.

9- Cranes

We have a total of ----8----- units (15 mt - to 50 mt).



(See the attached Photos at the end of Profile)





Refrigerator Trucks Services

GISI: has an experience of transport refrigerator trucks and distributions for food ration to up country in Sudan GISI: with J.V companies owned a fleet of refrigerator trucks, and multi-temperature controlled 3rd party logistics company. We specialize in transport food and beverage products, pharmaceuticals, and select general commodities.

GISI Fleet, Controlled transport department specializes in grocery warehouse deliveries that require appointment scheduling. We make all necessary arrangements to deliver your product in a timely and professional manner. GISI has the ability to deliver a wide range of products. Whether fresh or chilled, you can expect the most consistent careful handling of your perishable products GISI: has excellent service to most states in Sudan and contracts with only reliable temperature controlled transportation companies.

GISI: is the company to deliver your time sensitive and temperature controlled products.

Hands-on management team All-inclusive rate structure We understand retailer routing guides Multiple licensed programs High-security modern facility Excellent distribution services



Logistics

Logistics has an impact on the overall productivity of companies when they are faced with challenges and threats. To respond to these threats and challenges every company needs to improve each activity associated with logistics.

GISI Group. we understand the competitiveness of this environment and have dedicated a service to compress cycle time, reduce lead time in responding to a customer order, maximize inventory control and provide better customer service.

Our logistics department has a high degree of control in making a significant reduction in cycle time by using our "fastest" concept based in 4 activities to improve cost savings:

- Faster order transmittal
- Faster order processing
- Faster order preparation
- Faster shipment and inland transportation delivery

Air Transport cargo

At GISI Group we provide air cargo services For importers and exporters and will provide:

- Assistance in preparing air freight document
- Assistance in preparing the shipper export declaration
- Assistance with air freight customs issues
- Pre-clearance for air shipment.
- Air cargo Service for domestic with in Sudan air ports.



Logistics & Warehousing

GISI offers a full range of logistics and warehousing services, including Vendor Managed Inventory (VMI) Service, Raw Materials Distribution, Finish Goods Distribution, Reverse Logistics and After Sales Logistics. It also includes distribution assortment, cross-docking, "just-in-time", sequenced supply synchronized delivery management, and in-transit mixing product support.



Ocean Freight

Diversified Freight System is an independent full-service division of the GISI Express Group. Working closely with a handful of select carriers to enhance our quality service, DFS provides effective logistics solutions at lower costs that help our customers grow and stay competitive in today's competitive ocean freight market.

At GISI group we offer container services between most major ports. Our expertise in the maritime industry enables us to provide import and export freight transportation. We can arrange an FCL (full container load) or an LCL (less than a container load) with most ocean carriers around the world at a very competitive rate.



Storage Facilities

No.	Type of storage facilities (covered ware house, open storage yard etc)	Owned, leased or other	Location (city/ country)	Size (sq.m.)	Type of No. of materials handling equipment available	Bonded yeas/No	Security arrangement
1	Covered warehouse	Leased	Khartoum South	2500	Forklift ranging from 5 to 10 tons + manpower & cranes	Yeas	Lighting, guarding, fencing etc.
2	Covered warehouse	Owned	Khartoum South	2500	Forklift ranging from 5 to 10 tons + manpower & cranes	Yeas	Lighting, guarding, fencing etc.
3	Covered warehouse	Leased	Khartoum North	300,000	Forklift ranging from 5 to 10 tons + manpower & cranes	Yeas	Lighting, guarding, fencing etc.
4	Covered warehouse	Leased	Khartoum North	300,000	Forklift ranging from 5 to 10 tons + manpower & cranes	Yeas	Lighting, guarding, fencing etc.
5	Open storage yard	Leased	Port Sudan	10,000	Forklift ranging from 5 to 10 tons + manpower & cranes	Yeas	Lighting, guarding, fencing etc.
6	Open storage yard	Leased	Obeid	15,000	Forklift ranging from 5 to 10 tons + manpower & cranes	Yeas	Lighting, guarding, fencing etc.



River Transport

GISI: can provide river barge transport all across white Nile and blue Nile and in all ports of Sudan.

We avail of well-established schedules for transportation with re-loading from, and to up country in Sudan.

GISI River Transport Company is to meet our Customer's expectations. We will become a total quality company by continuously improving all our work processes to satisfy both our employees and customers' needs. We will provide reliable, competitive interstate transportation of bulk food-grade commodities and containers. We build trust and teamwork with open, candid communications up, down and across our company. We encourage high expectations and we will strive to be the best in river transport services.

Together with our partners we operate more than 06, Barges specialies for loading steel bars/ coils/general cargo/containers/ and relief food as transit cargo through the port of Kosti / Malkal and Juba.



Cargo Insurance GISI

provides cargo insurance brokerage for protecting your domestic and international shipments.

Customs clearance

We know how GISI it can be when dealing with customs so we will assist in all customs procedures from basic formalities to the most advance customs issues.

You can rely on us for customs clearance and customs bonded warehouses.

GISI will provide to our customers with a high level of satisfaction in most logistics areas so they can improve the overall productivity of their company. To achieve this goal we will focus our strength to improve activities associated with:

- Transportation (to focus on a better network for moving products)
- Warehouse and storage (to improve savings)
- Order fulfillment (to reduce cycle time)
- Production planning (to provide effective inventory control)

Supply and Logistics

The supply and demand placed on warehouse and distribution is greater than ever. The warehouse and distribution provide both movement and storage and have become the points in the logistics systems where a firm stores, holds, and moves raw materials, semi finished goods or finished goods. At GISI Group. We understand this demand and have designed a distribution & warehouse support with the following value-adding roles to accommodate and meet our customer's needs.

- Transportation
- Consolidation
- Product mixing
- Other activities associated with products (packing, shrink-wrapping, palletizing, sorting, segregating and labeling)

We will provide operations to reduce cycle time, lower inventory, and lower cost and provide better customer service:

- Receive goods from a transport network
- Transfer goods safely into a designated place in the warehouse
- Select the combination of goods for each customer order
- Load shipment for shipping to the customer
- Trucking services (deliveries)

Our services can be tailored to fit a variety of short and long-term solutions. Please contact us for further details or to discuss specific needs.

Rig Moves & Transportation:



When performing a rig move, GISI supplies all of the needed trucks, low bed and cranes as well as truck pushers and laborers on site. Given our past experience, GISI is well known for our speed in rig moves and minimal downtime combined with the highest professionalism and safety. Inland transportation services for equipment and materials needed for the oilfield operations are also offered by GISI.



From Site to Site: Complete Rig + Camp moves , Block-Trains Shipments , Full Sea/River Vessel , Trucking to Site , Rig Storage Facilities, and Rig Move Handling from "Site to Site."

Equipment Rental for Rig Operations:

Cranes , Forklifts , Field Camps Generators and compressors.

General Supplies

The following supplies are available upon request:

- Prefabricated houses
- Vehicles
- Safety Equipment
- Oil and grease
- Furniture
- Spare parts
- Local procurement



OPERATIONS:

These divisions carried out the activities of the land transport, generally in both paved and rough roads and looking after the fleet and equipment in terms of management and administration. Conducted several programs in the field of land transport, executed contracts for NGOs such as SCF (UK) and European Community (EC) by transporting ground nut seed from Khartoum to Darfur and Sorghum from central Sudan to Darfur for EC through SCF (UK), and Sorghum from Rabak to North Darfur and from Fasher town to some other areas within North Darfur State for SCF (UK).

The company has provided land transport for some strategic commodities such as Sugar for different companies from different areas of origin, Kenana Sugar Factory, to Nyala and Khartoum.

BREAKDOWN OF CONTRACTS WITH UN & NGO'S ETC...:

United Nation Mission In Sudan Projects:

Al Gurashi Company joint UNMIS Short list and Award big contract of Freight forwarding and inland services for a period of two years,
contract No. PD/C0008/07

Contract signed on 11 Feb 2007 in New York and effect until 27 April 2009
 The Operation Now is running and the company is doing excellent



UNMIS

UNICEF Transportation Services Contract 2007

Al Gurashi Company Award UNICEF Contract of inland transportation services within region including Sudan and Chad for a period of Six Months,

Contract No. SSA/SUDA/2007/00005269-1,

Contract signed on 19 Sep 2007 in Khartoum - Sudan and effect until 30 Dec 2008



unicef

Al Gurashi Joint Food and Agriculture Organization of the United Nations

Al Gurashi Joint Food and Agriculture Organization of the United Nations

short list in Sudan and awarded **contract No. OSRO/SUD/709/CHF/07-338**

AL Gurashi Co. Did a big operation for Supply of Kenana Natural fodder for Milk, up to 200 MT and delivered to FAO Kassala W/hs. And Darfur



GOAL Ireland, Sudan Project NFI Kits 2007

AL Gurashi Co. did a very good job on this project and good performance for the managements in Supply and transportation with fast delivery to the final destinations.

GOAL Ireland Sudan - order reference: - **T- GO- SDN- KTM- 271206- NFI kits**

Al Gurashi Company did the contract with Goal Sudan for supply 4000 NFI kits to 3 locations in south Sudan (Abyei - Kassala and Malakal).



(Concern World Wide) New Big Project in Darfur May 2007 :

Project No. Ref. # SUD/KHT/02/07/002 - Darfur (Geneina and Morni)

Al Gurashi Co. doing now Big Operation for Supply and Transportation of concern World Wide NFI to two destinations in Darfur, the company did faster and finished the operation in a short time.



International Freight & Logistics Network , Operations In Sudan with Mobitel (Zain) :



INTERNATIONAL
FREIGHT &
LOGISTIC
NETWORK. INC.

IFLN is a global alliance of selected air and ocean transportation and logistics providers offering Shippers & Consignees cohesive, versatile and competitive support for all their shipment requirements worldwide.

Algurashi Co Joint International Freight & Logistics Network **IFLN** and Award Contract of inland Transportations services in Sudan (Containers From Port Sudan to Khartoum) Haulage agreement between IFLN/Al Gurashi Co , signed in Kingwood, (Houston), Texas USA

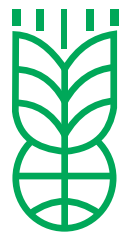


Save The Children: AL Gurashi Contracted by GAA to transport **Project BMZ 1023 2002/2003 - 1,814 MT** of food relief assistants to Rabkona, Bentiu & Mayom.



Germen Agro Action:

Provision of (1,380.7 M/T) from Khartoum to Darfur 2004. by Al Gurashi Co.



ICRC: Provision of **(1,380.7 M/T)** from Khartoum to Darfur 2004. by Al Gurashi Co.



European Community (EC):

Provision of Supply and transport of (2500 M/T) during 2003-2004



WFP: Provision of transport (78,351.55 M/T) by our Company MIDO International, for Refugees Camps and other destinations from year 2001 up to Dec.2004, A total Of 50,367.34 MT by Al Gurashi Co LTD 2004 - 2005

ICRC: Provision of (1,380.7 M/T) from Khartoum to Darfur 2004. by Al Gurashi Co.

SCF (UK): Provision of (3360 M/T) from Khartoum to Darfur.

UNICEF: Provision of (1,730.M/T) from Khartoum to Darfur - 2004, by Al Gurashi Co.



European Community (EC): Provision of transport is (2500 M/T) during 1998 - 1999.



Sudanese Sugar Company: Transport sugar from Kenana factory to Obeid, Khartoum, Um Rowaba, Nyala and Fasher. (430,800 MT) from 1997 up to 2004



GNPOC: Transported fuel from Khartoum (Shagara Depot) to Heglig base and Muglad. Around 1,850,000 Gallon of Diesel



CPECC: Pipeline Project -Sudan, transported construction equipment from Port Sudan to El Obied, Khartoum, Al Gaily and Um Syala, and vice versa.

ZPEB: Zhongyuan Petroleum Exploration Bureau - AL Gurashi Show good Out Put for two years Contracted to transport equipment (by 182 Trip) & Cement by total of (3,756 M/T) from port Sudan to Ballila, Heglig, Rabcona, & Bentiu (Block5A).

Germen Agro Action:

AL Gurashi Contracted by GAA to transport Project BMZ 1023 2002/2003 - 1,814 MT of food relief assistants to Rabcona, Bentiu & Mayom. Passengers Buses: Contracted By Federal Air Lines - transported Sudanese Hags from 13 towns & 21 Villages to Kassala, Obeid, Muglad, and Airports.



Algurashi & Mido transported 32,000 MT during crop 2001/2002 from KSC site to Portsudan and Khartoum



United Nations UNMIS and UNAMID Operations To Darfur



Convoy UNMIS - UNAMID To Darfur



Refugees Convoy



SUPPLY

This division conducts all the activities that related to this scope of work, such as local purchase building material supplies, food - non food items and fuel supplies. (Supply of 2500 MT White Sorghum to Euron Aid) - NFI for NGOS - GOAL - Concern World Wide and FAO.

Supply food and Seeds

AL Gurashi International Co. Sudanese Company for distribute import and export products in Sudan and supply food items and export of agricultural products for:
(Red and white sesame, hibiscus, white and red sorghum, maize, beans, pulses, lentils, ground nuts, watermelon seeds, Sunflowers seeds, Hibiscus and charcoal)

Our company's mission is to Supply and deliver the best agricultural products with a first class customer service. . . .

- We built long term business cooperation with many clients .
- We hope to build good relationship with the clients all over the world.
- We are currently having a promotional offer for new customers.

If you are interest in our product send your order including Total quantity / Mt, Technical specification Our products are sold well to Europe market and United Nation in Sudan (European Community, WFP). We develop and supply superior cultivars and provide exceptional service to all our customers

Our Beliefs:

- We strive for excellence.
- We believe in the importance and development of people, and value diversity.
- We strive to offer challenges and opportunities to all those dedicated to growing with us.
- We operate with honesty, integrity, transparency and professionalism.
- We encourage creativity, initiative and enthusiasm.
- We are proud of our independence.





Red Sorghum



White Sorghum



Sudanese Ground Nuts



Maize



Watermelon Seeds





White Sesame Seeds



Red Sesame Seeds



Lentils Seeds



Lentils and Beans



Beans



Pulses





Sun flower Seeds



Hibiscus



Different Kinnds of Seeds

Supply (None Food Items)



Cement and Building Materials:



Water Pumps & Water Filters



Generators:



Ambulance



MAIN OFFICE:

Our main office is located at Khartoum - street 45 Al Amarat - New Extension

For more details, please contact Mr. Gurashi /A /Gadir Al Khabir:

Mob. : +249-912300343



GISI **Al Gurashi** International Services & Investment Co. Ltd.

Transportation - Camps services - Supplies -
Local Purchases - Agent Sales - Export & Import

Gurashi A. Rahman A. Al Khabir
Chairman

Khartoum -New Extension Str. 45 (Airport Side)
Tel.:83 499824 - 83 499822 Fax: 83 499821

E-mail: gurashi45@algurashi.com www.algurashi.com

E-mail: gurashi45@yahoo.com

All site offices have checkers and other helpers under the control to these coordinators.
Looking forward to be of services to your great organization

Thank you, we remain.

Yours truly,

Gurashi A. Al Khabir
Chairman of GISI